

GHANA'S CULTURE

Food, and cuisine

- Main dishes are based off of starches
- Goes with soup or sauce containing protein
- Almost every Ghanaian soup is red or orange
- Tomatoes, chili pepper
- Very light and watery
- spicy
- Yams, maize, beans, sweet potatoes, palm oil, groundnut, crab,
- Rice and wheat are being incorporated into Ghanaian style cooking
- Small breakfasts
- Sweet drink and bread
- Most dishes make use of a savory stew alongside the main dish



Clothing

- Elders typically wear traditional garb such as
- Lighter fabric called Kente made by the Askan people used for special occasions
- The younger generation typically wear more modern attire such as jeans and short sleeved shirt



Etiquette and dining information

- When eating wait to be told where to start
- Ask for utensils if wanted
- If using hands use right thumb and index finger
- Never reach from across the bowl
- A washing basin will be passed around before the meal
- Wait for the oldest male to start eating before you do



Housing

- Due to severe overcrowding, the government has contributed to providing low-cost shelter to certain parts of Ghana

GEOGRAPHY

4 main Geographical Regions:

Low Plains, Ashanti Uplands, Volta Basin and the Akwapim-Togo Ranges

Low Plains: Flat, Featureless, Is apart of the four subregions



Aardvark



Antelope

Annual mean temperature 26 C and 29C

No natural harbors

Highest elevation is Mount Afadjato

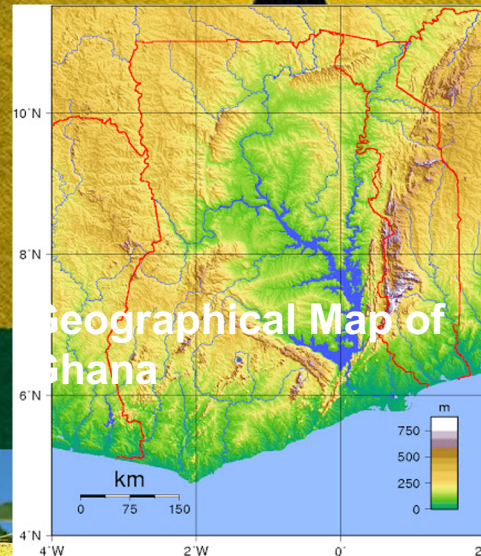
A bit smaller than Oregon

Mainly plains

Volta Basin: covers 45% of the land surface. Low terrain 60 to 150 meters average in elevation. Road transportation is not great



Evergreen Forest



Geographical Map of Ghana

Continent: Africa

Size: 92,100 square miles

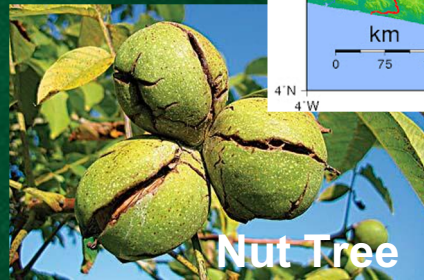
Hemisphere: Northern hemisphere

Biomes: Savanas, deciduous forests, and evergreen forests

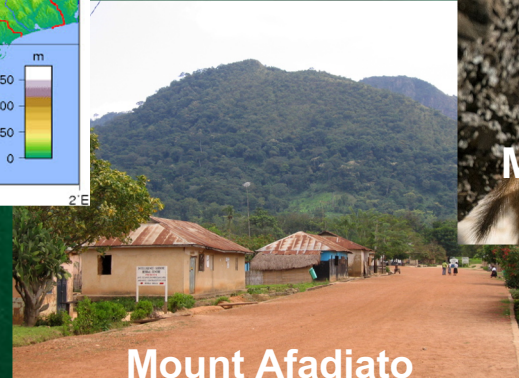
Animals: Aardvarks, hippos, patas monkey, african giant snail, mongoose, lions, zebras, antelope

Plants:

- Brode, a plantain tree
- Bankye a red plant used for soup
- Amangyedua a parasyte plant
- And Bese a nut tree



Nut Tree



Mount Afadjato



Mongooses

GHANA'S CULTURE

- Religion

- 71.2% Christianity
- 17.6% Islam
- 6.2% Traditional faiths
- 4.1% None
- 0.9% Other

- Soccer team won the world cup in 2006



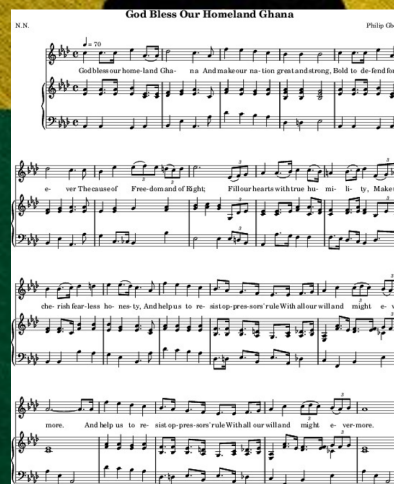
- Famous People

- Shasha Marley
 - Wrote hit song 'Twin city Mafia'
- Abedi Pele



GOVERNMENT

- Name
 - Long form: Republic of Ghana
 - Short Form: Ghana
 - Former: Gold Coast
- Capital: Accra
- Type of Government: Presidential Republic
- Independence Day: March 6, 1957 (from UK)
- Citizenship: If one parent or grandparent is a citizen
- National Anthem: God Bless our Homeland Ghana
- President and Vice President elected, by popular vote only for four year terms
- Cabinet appointed by president approved by parliament
- Supreme Court with 13 justices
- 275 seats in parliament
- Parliament elected by a simple majority vote
- Current President: Nana Addo Dankwa
- Current Vice President: Mahamudu Bawumia



ECONOMY

- Some imports are:
 - cars
 - refined petroleum
 - Rice
- Some exports are
 - Oil
 - Gold
 - Cocoa
- GDP Per capita: \$4,400



GHANA'S TIMELINE

- *12th century - Akan people developed gold trade*
- *1240 - Controlled by Sundiata*
- *1482 - The Portuguese established first permanent trading post*
- *1874 - British claimed coastal area as crown colony*
- *Late 1400s to mid 1800s - west africans captured & sent to Americas and Caribbeans as slaves*
- *1925 - First legislative council elections*
- *1957 - March 6 - gained independence*
- *1960 - Declared republic*
- *1966 - Nkrumah (The President) overthrown in military coup*
- *1994 - Major violence in the Northern Region following ethnic clashes between the Konkomba & the Nanumba over land*
- *2007 - June - Major offshore oil discovery*
- *2007 - September - worst floods for more than 30 years cause widespread devastation, destroying lots of annual harvest*
- *2008 - December - John Atta Mills elected president*
- *2010 - December - Offshore oil production begins*
- *2012 - July - President Mills dies, and is succeeded by John Mahama*
- *2013 - Authorities arrest hundreds of Chinese and other migrants are working in unlicensed gold mines*
- *2014 - July - protests against the government's alleged mishandling of the economy*
- *2017 - January - Opposition candidate Nana Akufo-Addo sworn in as president*
- *2020 - Nana Akufo-Addo was re-elected*