



New Zealand

Aotearoa

4,545,627 people – Languages: English, Maori

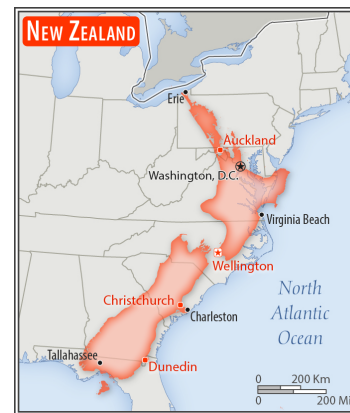


Where is New Zealand?

Capital city: Wellington

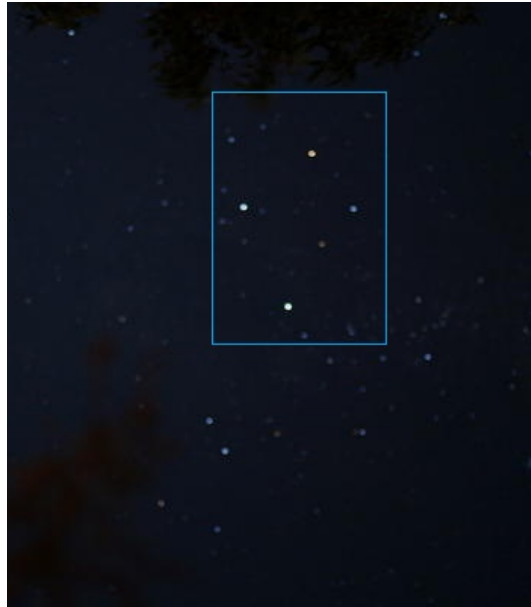
Most of New Zealand is in the UTC + 13 time zone.

New Zealand has 268,838 sq km with
land: 264,537 sq km
water: 4,301 sq km





New Zealand is made of islands created 23 million years ago by land thrust out of the ocean by volcanic forces. New Zealand has more than 50 volcanoes, some are still active.




Kiwi, silver fern, Southern cross constellation:
national symbols




Sky Tower

A tall, white, cylindrical tower with a circular observation deck at the top, set against a dark sky.




Southern Alps

A wide, panoramic view of a mountain range with snow-dusted peaks and green valleys, under a bright sky.




Fox Glacier in Mount Cook National Park

A close-up view of a massive, white glacier with a small airplane flying over it, set against a blue sky.



Lake Matheson, Southern Island

A calm lake reflecting the surrounding forest and snow-capped mountains under a clear blue sky.



Auckland, largest city

Aerial view of a city at night, illuminated by streetlights and building lights.