

Iceland

Six Rivers Montessori Delegation



Basic Information:

Capital city: Reykjavík

Population: About 340,000 people

Native Language: Icelandic

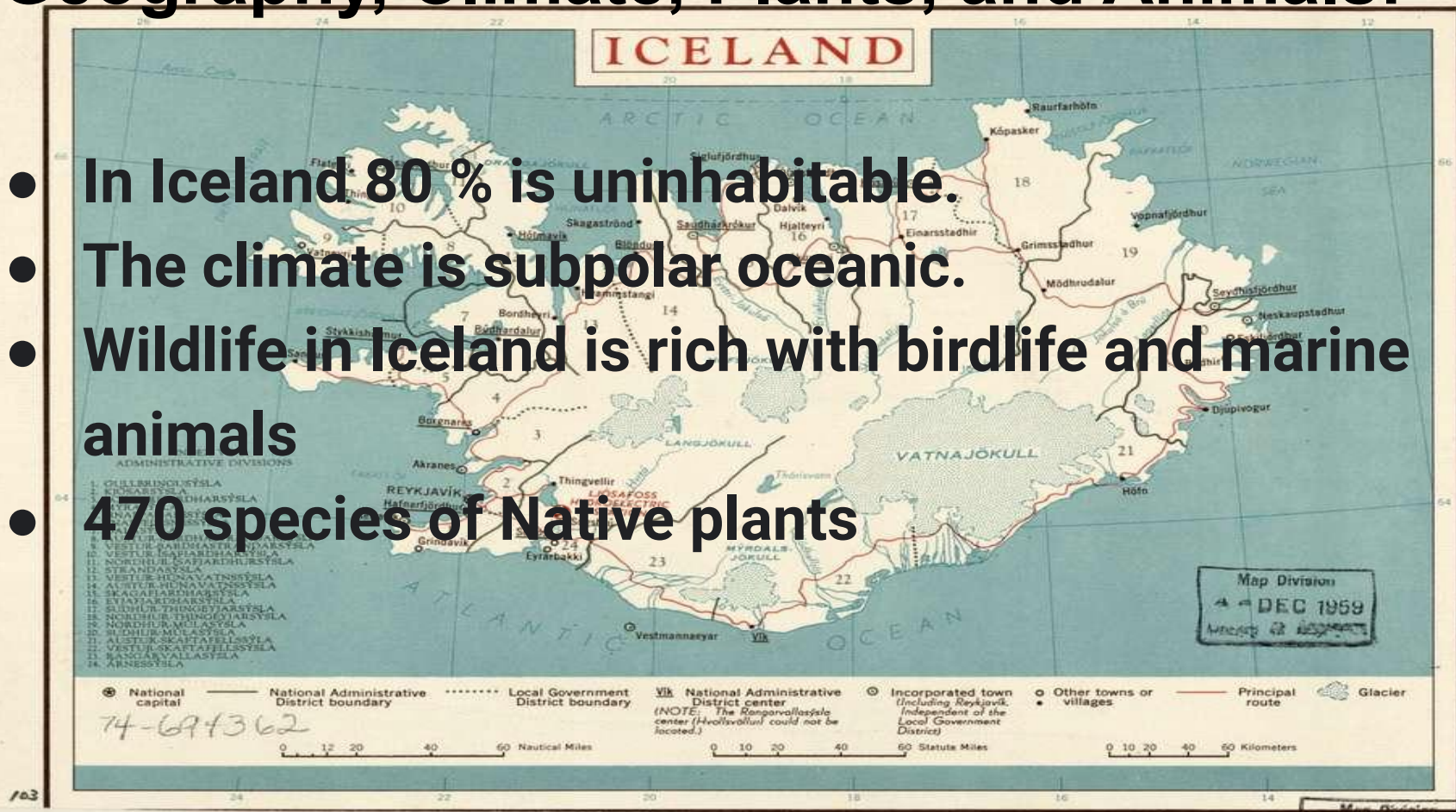
President: Guoni Th. Johannesson

Prime Minister: Katrin Jakobsdottir

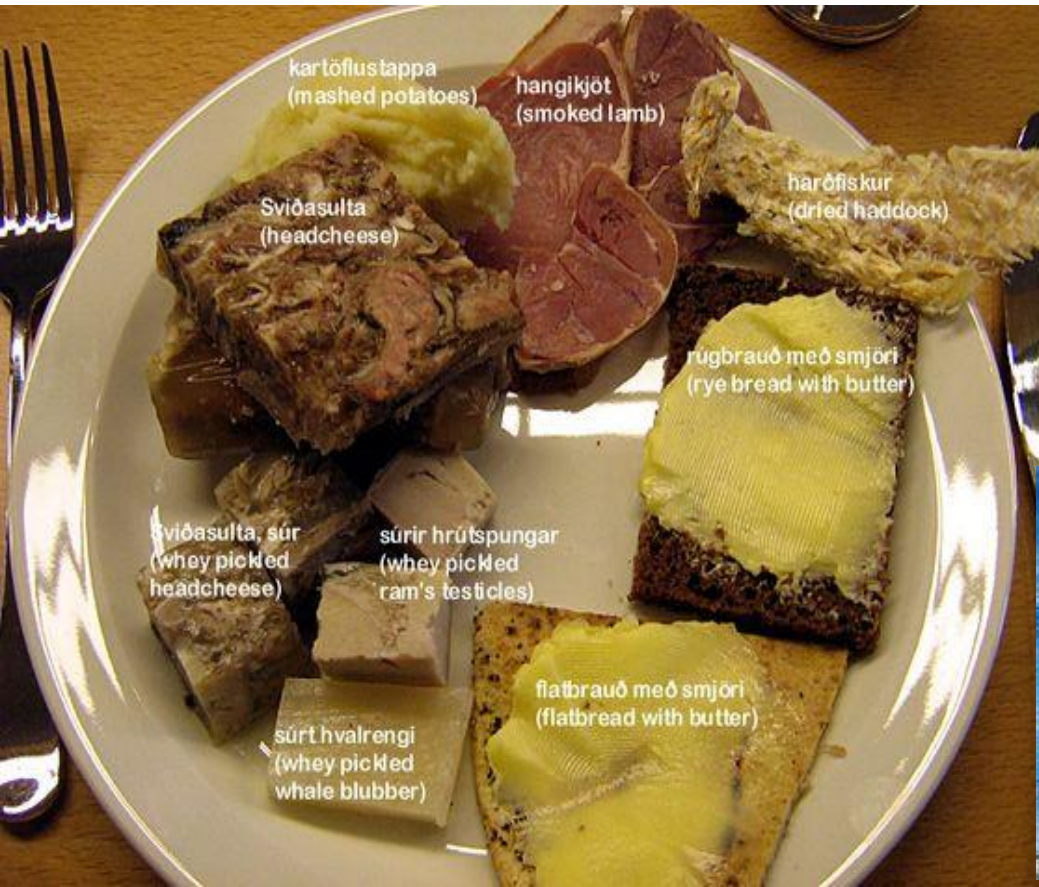


Geography, Climate, Plants, and Animals:

- In Iceland 80 % is uninhabitable.
- The climate is subpolar oceanic.
- Wildlife in Iceland is rich with birdlife and marine animals
- 470 species of Native plants



Food, Clothing, and Arts, Music Culture



Icelandic Folklore: Elves



Huldufólk or hidden people are elves in Icelandic and Faroese folklore. They are supernatural beings that live in nature. They look and behave similarly to humans, but live in a parallel world.